

V. Wastes and risks to the environment

A. Overview on Philex operation

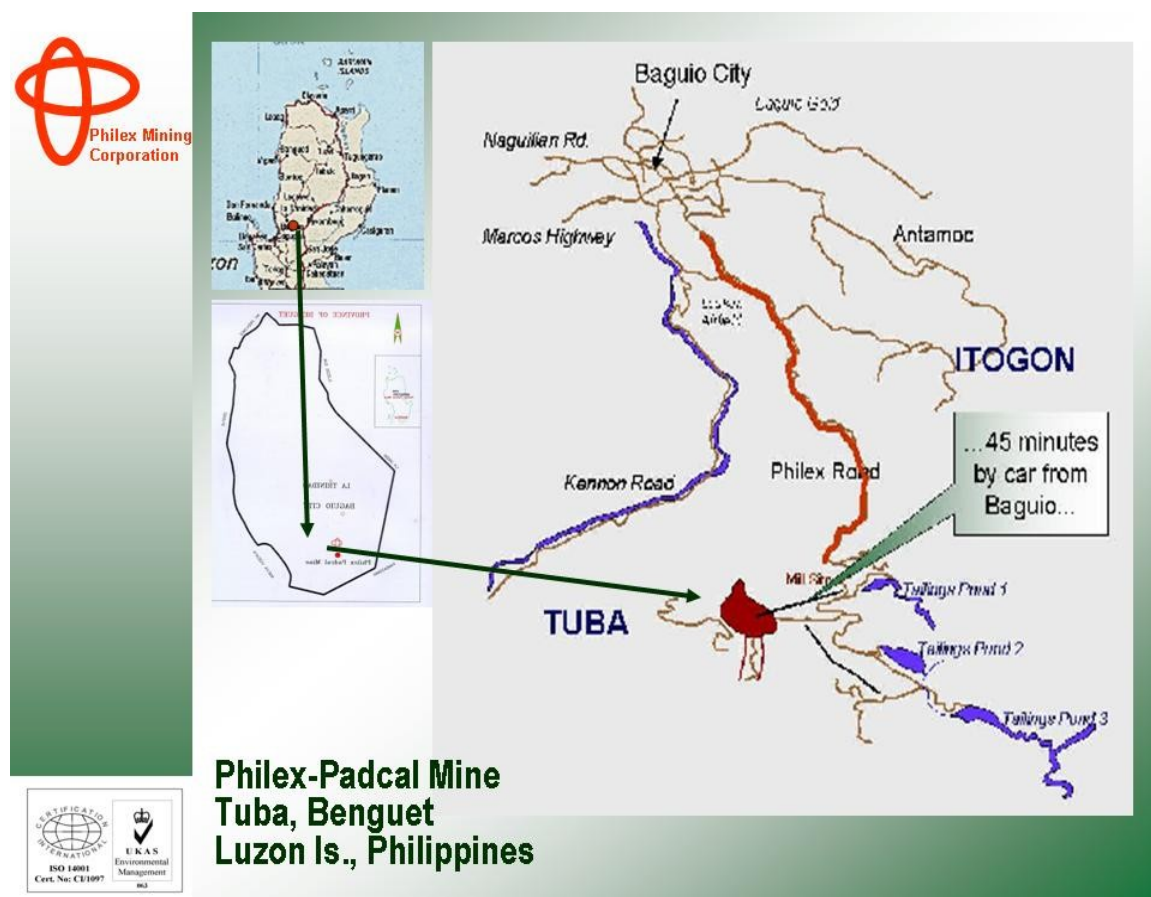
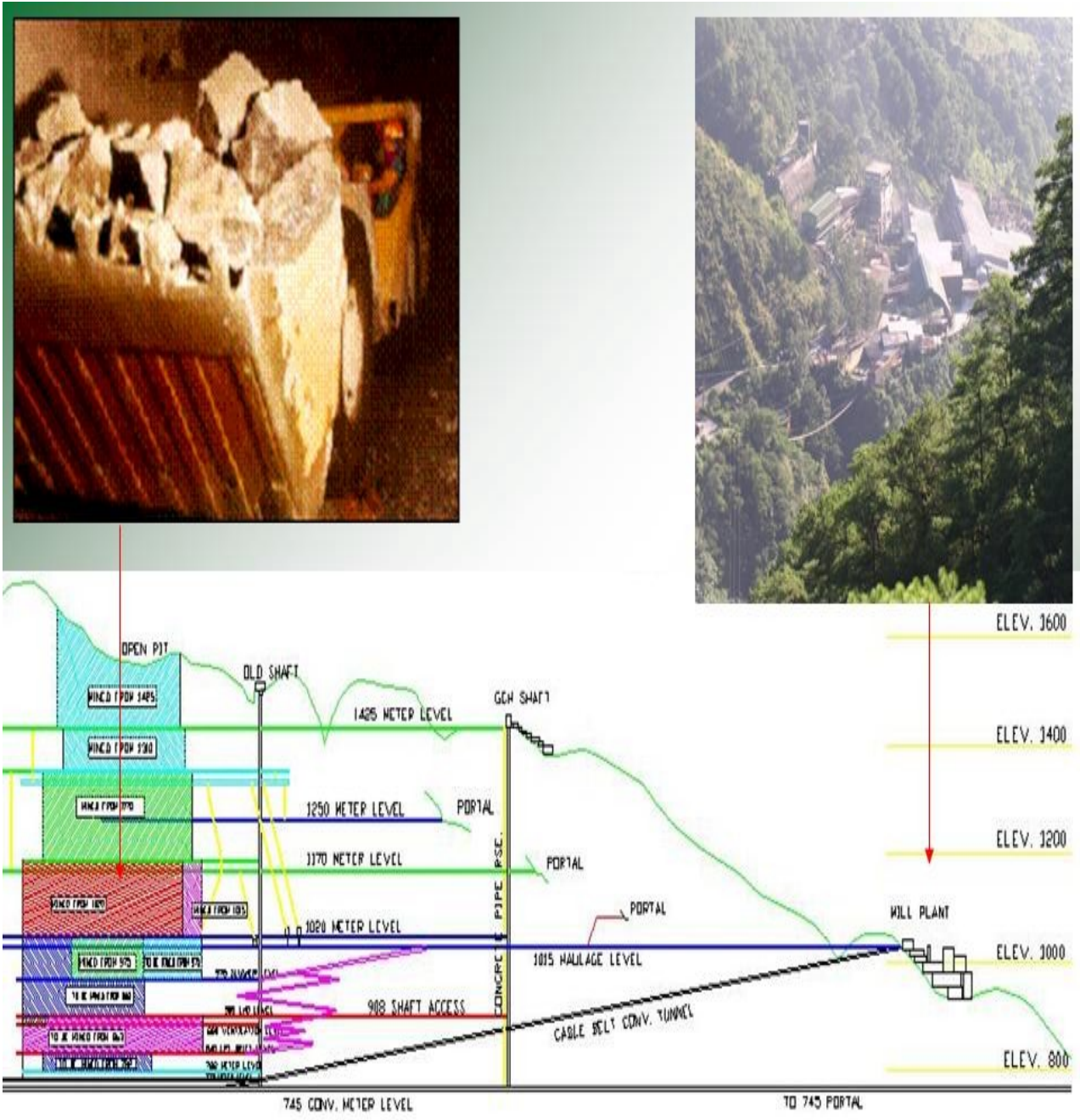


Figure 39. Philex Mining Corporation ore body and mill

As discussed in Chapter 4, the milling plant is 2.7 kilometers away from the ore body (Sto. Tomas II deposit). The ore body is located in Pacdal, Municipality of Tuba, Benguet Province. CADT (Certificate of Ancestral Domain Title) holders report that the Philex tailings ponds are in the Municipality of Itogon, Benguet. Thus, effectively, Philex mine operations are not only in the Municipality of Tuba but also in the Municipality of Itogon. Philex mining facilities or infrastructure straddle in two municipalities: Tuba and Itogon.

As indicated by Figure 40 of the next page (and also by Figures 18 and 20 of pages 18 and 19), the Philex ore body is just below the site of open pit mining done several years ago. Figure 20 page 19 of Chapter 4 even indicate the outline of open pit mining operations above the underground mining operations.



VERTICAL SECTION OF PHILEX-PADCAL MINE

Figure 40. Close-up on Philex Mining Company ore body and mill